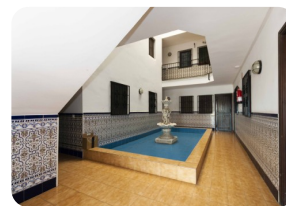
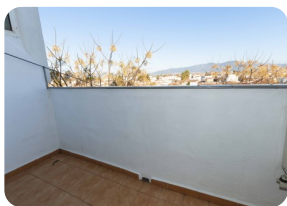


Pretty typical apartment, close to shops with open mountain views - Empuriabrava



37m²



33m²



1



1



1

- For sale
- Constructed surface (37 m2)
- Living surface (33 m2)
- Air con Hot/Cold (1)
- Airport (55 min)
- Amenities nearby
- Beach walk (15 min)
- Beach by car (3 min)
- Certificate of Habilitat in process

- Date of construction (1987)
- Energy certificate
- Furnished Fully
- Golf Resort (25 min)
- Kitchen american (open)
- Kitchen fully equipped
- Floor (2)
- Mooring possible
- Mooring rental

- Municipal electricity
- Municipality water
- Parking outside
- Parking public
- Terrace covered
- Terrace open
- Terrace private
- Trainstation (25 min)

