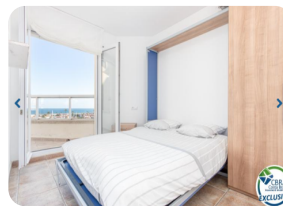


*RESERVED - Magnificent penthouse with incredible sea views and a large 59m2 terrace - Club Nautic, Empuriabrava*



70m<sup>2</sup>



2



1



1



1



1

- For sale
- Constructed surface (70 m2)
- Terrace surface (59 m2)
- Air con Hot/Cold
- Airport (50 min)
- Amenities nearby
- Beach walk (10 min)
- Center situated
- Double glazing

- Easy rentals
- Energy certificate
- Furnished Fully
- Golf Resort (20 min)
- Kitchen american (open)
- Kitchen fully equipped
- Kitchen fitted
- Lift
- Floor (6)

- Mooring possible
- Municipal electricity
- Municipality water
- Nearby a harbor
- Parking private
- Storeroom
- Terrace open
- Terrace private
- Trainstation (20 min)



**ImmoPlazaSpain.com**

Avenida Europa • Edificio Bahía III

Tel. +34.872.222.420 • 17487 Empuriabrava • Spain

**api** A10286  
Icat 5179