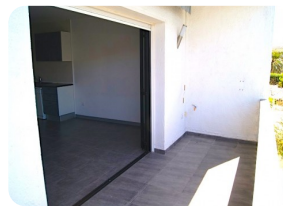


Modern apartment with 2 bedrooms and mooring 12 X 2,50M at 15 min. from junction Sea Empuriabrava - Costa Brava



76m²



70m²



12m



1



1



1



1

- For sale
- Air con Hot/Cold (2)
- Airport (55 min)
- Amenities nearby
- Beach by car (5 min)
- Certificate of Habilitat in process
- Renovated in (2015)

- Double glazing
- Easy rentals
- Energy Certificate in process
- Golf Resort (20 min)
- Kitchen american (open)
- Floor (1)
- Mooring private

- Parking public
- Storeroom
- Terrace covered
- Terrace private
- Trainstation (25 min)

