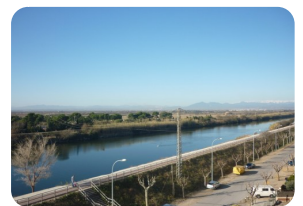
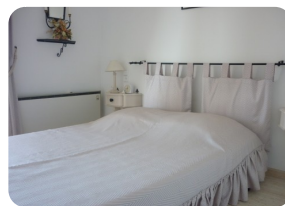


*Apartment in first sea line with a large terrace of 16m²
with sea views - Empuriabrava - Costa Brava*



61m²



45m²



1



1



1



1

- For sale
- Constructed surface (61 m²)
- Living surface (45 m²)
- Terrace surface (16 m²)
- Airport (55 min)
- Amenities nearby
- Beach walk (1 min)
- Center situated
- Certificate of Habilitat in process

- Easy rentals
- Energy Certificate in process
- Furnished Fully
- Golf Resort (25 min)
- Heating electric
- Kitchen fully equipped
- Kitchen fitted
- Kitchen independent
- Lift (1)

- Nearby a harbor (5 min)
- Parking outside
- Parking public
- Terrace covered
- Terrace private
- Trainstation (25 min)
- Intercom
- Wardrobes

